

FOR IMMEDIATE RELEASE:

Jan. 22, 2026

CONTACT:

Laurie Metanchuk, Director of Community Engagement
Brittany Kovach, Communications & Marketing Supervisor
630-232-5980 forestpreserve@kaneforest.com



Forest Preserve District of Kane County
1996 S. Kirk Rd., Ste. 320, Geneva, IL 60134
www.kaneforest.com

Forest Preserve District expands Meissner-Corrn Forest Preserve by 45 acres

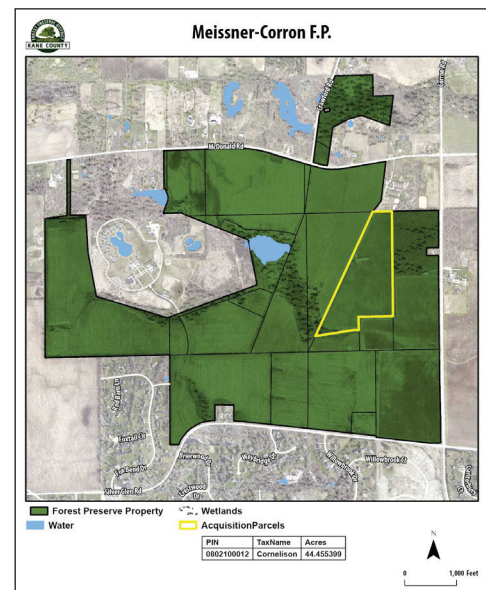
GENEVA, IL — The Forest Preserve District of Kane County made a 45-acre expansion to Meissner-Corrn Forest Preserve in St. Charles, Jan. 13.

The acquisition fills-in a triangular, wedge-shaped section within the northeastern portion of the preserve.

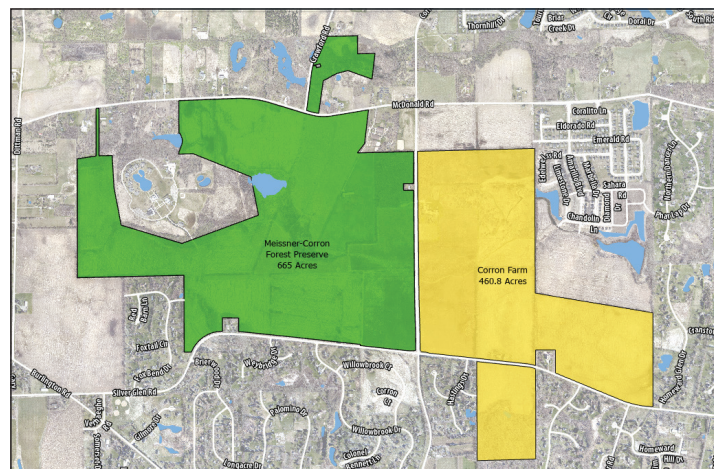
The 45 acres consist primarily of fenced horse pasture, an outbuilding for horses, and an access route for maintenance. The horses utilizing the cool-season grass pasture will remain for one more year, until the current lease expires. Afterward, the District will begin a prairie restoration.

Meissner-Corrn Forest Preserve now totals 665 acres. What's more, the site is adjacent to an area managed by Campton Township Open Space. Combined, both agencies protect a contiguous 1,126 acres of natural area in the complex.

Forest Preserve District Executive Director Benjamin Haberthur said the new land investment adds what appeared to be a missing piece, and further protects a high-quality natural area within the preserve.



With a 45-acre expansion to Meissner-Corrn Forest Preserve, the preserve now totals 665 acres, and is the 11th largest in the District system.



Meissner-Corrn Forest Preserve abuts Campton Township Open Space's Corron Farm. Combined, the two holdings protect 1,126 acres of open space.

— MORE —

— **ADD ONE** —

Forest Preserve District expands Meissner-Corrn Forest Preserve by 46 acres
FOR IMMEDIATE RELEASE: Jan. 22, 2026

“The beauty in the protection of this parcel is in the shape. Like a missing puzzle piece locking-in, we’ll now be able to see a more intact picture of the natural landscape of Kane County. There’s also a sensitive ecological area that is already protected at Meissner-Corrn Forest Preserve. An Illinois Nature Preserve was dedicated here in 2015 as Meissner-Corrn Prairie and Sedge Meadow. The permanent conservation of this parcel protects the interior of Russel Fen, and buffers the vulnerable plant species from animal predation and invasive species infestation,” he said.

The Forest Preserve District invested \$947,965 in the 44.45-acre addition, however, that cost will be offset by a \$190,000 acquisition grant from the Prairie State Conservation Coalition (PSCC).

“The mission of protecting the entire suite of life for future generations is bigger than the District. We’re always open to new and effective partnerships. We want to be on the cutting edge of conservation, and right now that is Prairie State Conservation Coalition (PSCC). We’re honored to have been selected as part of the inaugural class of PSCC land-acquisition grants, and we thank them for their support in this win,” he said.

The Meissner-Corrn acquisition brings total lands managed by the Forest Preserve District to 24,228 acres. For more information on Meissner-Corrn Forest Preserve or the Forest Preserve District, visit www.kaneforest.com or search @forestpreserve on social media.

— # # # —